

## LINE 29: BARSTOW - NEWBERRY SPRINGS

### EASTBOUND

From E Mountain View St

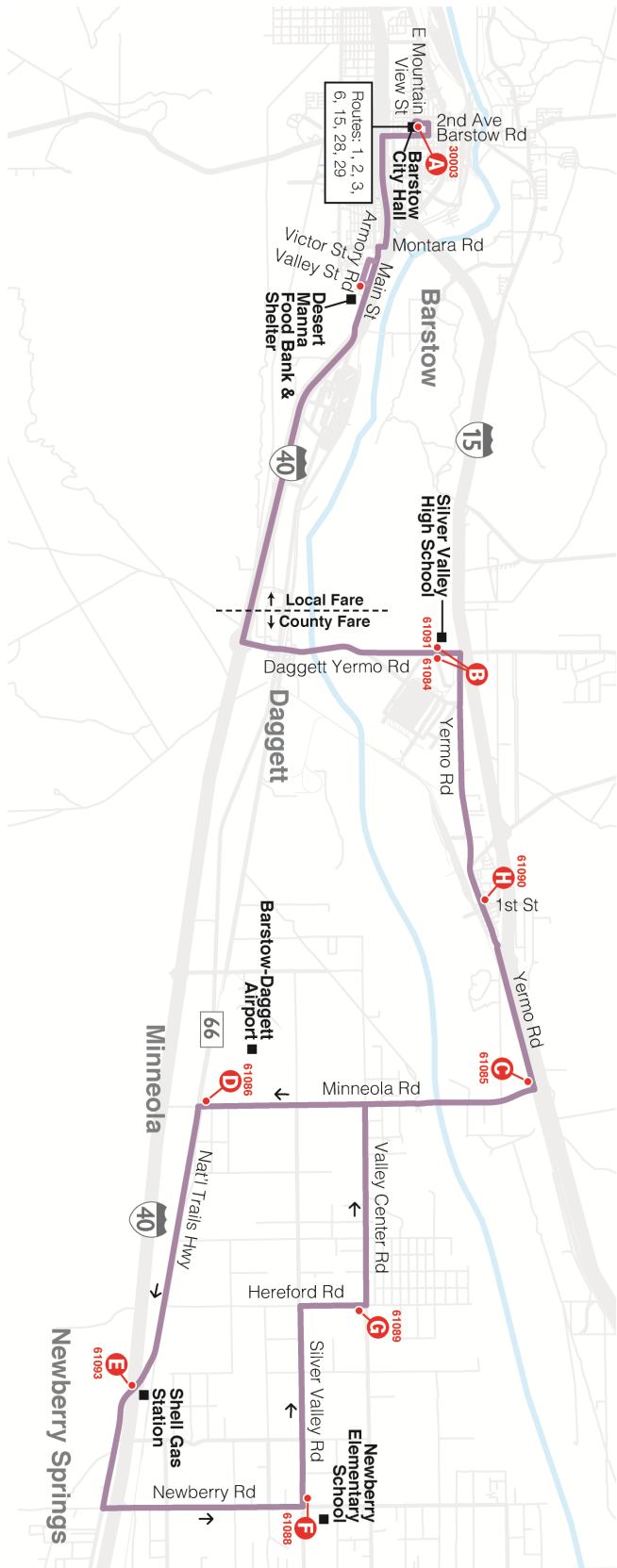
- (R) Barstow Rd
- (R) 15 Freeway North
- (R) 40 Freeway East
- (R) Montara Rd exit
- continue to across onto E Main St
- (R) Victor St
- (L) Armory Rd
- (L) Valley Ave
- (R) E Main St
- (R) 40 Freeway East
- (R) Exit 7
- (L) A St
- into Daggett-Yermo Rd
- (R) Yermo Rd
- (R) to stay on Yermo Rd
- (R) Minneola Rd
- (L) National Trails Hwy
- (L) into Shell Gas station Parking Lot
- at Shell sign
- continue behind Shell station
- DO NOT TURN RIGHT AT END OF SHELL BUILDING
- continue along wooden fencing and follow to right
- (R) National Trails Hwy
- to bus stop in front of Shell Station

### WESTBOUND

From National Trails Hwy

- (R) into Shell Gas station Parking Lot
- at Shell sign
- continue behind Shell station
- DO NOT TURN RIGHT AT END OF SHELL BUILDING
- continue along wooden fencing and follow to right
- (L) National Trails Hwy
- (L) Newberry Rd
- (L) Silver Valley Rd
- (R) Dune Rd
- (L) Valley Center Rd
- (R) Minneola Rd
- (L) Yermo Rd
- (L) Daggett-Yermo Rd
- (R) 40 Freeway West
- (R) Marine Corps Logistics Base exit
- (L) National Trails Hwy
- continue onto E Main St
- (L) Victor St
- (L) Armory Rd
- (L) Valley Ave
- (L) E Main St
- (R) Montara Rd
- (L) 40 Freeway West
- into 15 Freeway South
- (R) Barstow Rd exit
- (R) Barstow Rd
- (L) E Buena Vista St
- (L) 2nd Ave
- (L) Mountain View St
- to bus stop NS Belinda Ave

LINE 29: BARSTOW - NEWBERRY SPRINGS



**LINE 29: BARSTOW - NEWBERRY SPRINGS**

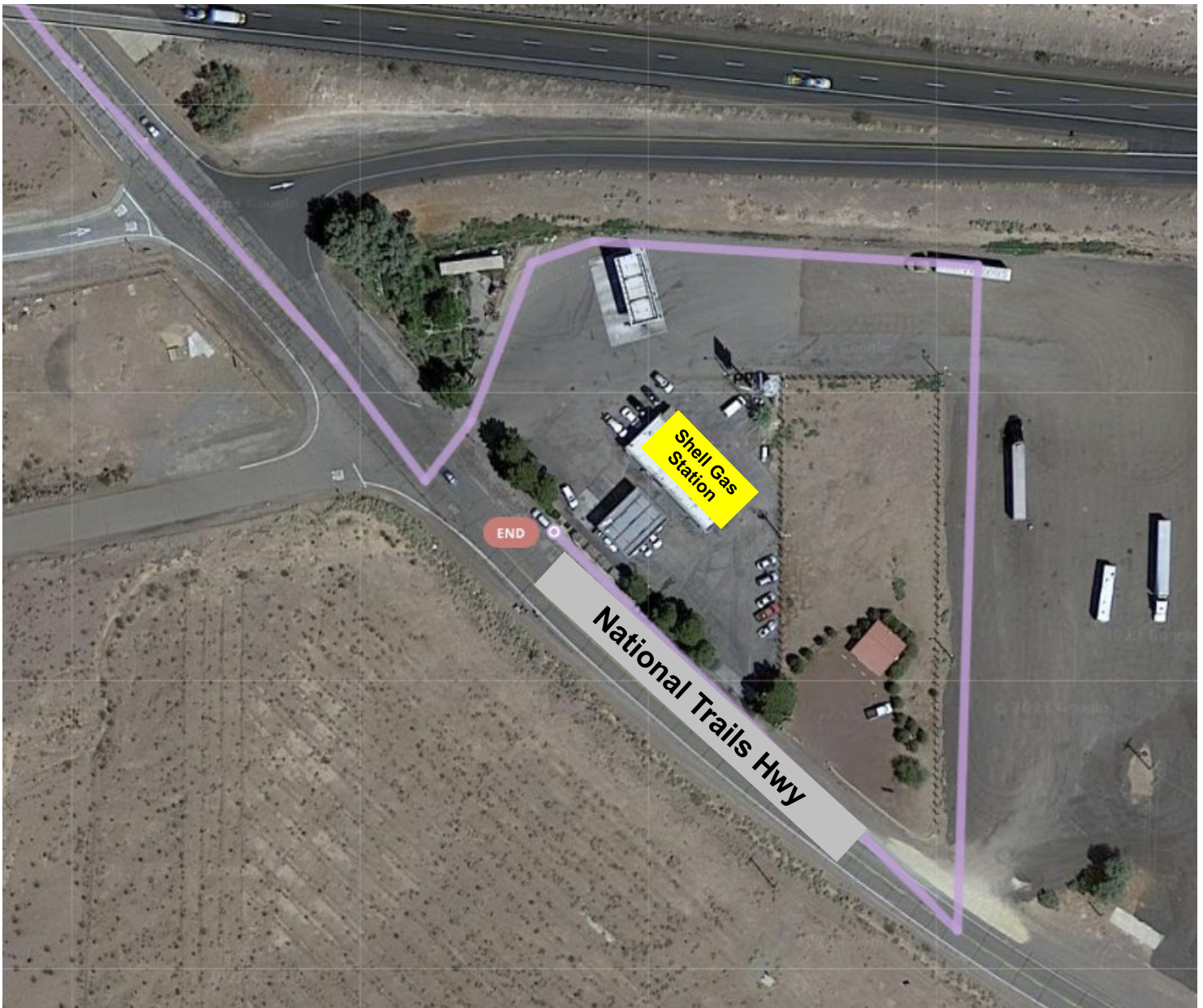
**WESTBOUND START OF ROUTE**





**LINE 29: BARSTOW - NEWBERRY SPRINGS**

**EASTBOUND END OF ROUTE**



## LINE 29: BARSTOW - NEWBERRY SPRINGS

### PULL IN/PULL OUT ROUTES

#### TO BARSTOW CITY HALL:

From Barstow Division, (R) Sandstone Ct, (R) W Main St, (L) 58 Freeway East, (R) 15 Freeway North, (R) Barstow Rd exit, (L) Barstow Rd, (L) E Buena Vista St, (L) 2nd Ave, (L) E Mountain View St, to bus stop NS Belinda Ave.

#### FROM BARSTOW CITY HALL:

via E Mountain View St, (R) Barstow Rd, (R) 15 Freeway South, (R) 58 Freeway West, (R) W Main St exit, (R) W Main St, (L) Sandstone Ct, (L) into Barstow Division.

#### TO NATIONAL TRAILS HWY & 40 FREEWAY:

From Barstow Division, (R) Sandstone Ct, (R) W Main St, (L) 58 Freeway East, (R) 15 Freeway North, (R) 40 Freeway East, (R) Newberry Springs exit, (R) National Trails Hwy, (L) into Shell Gas station Parking Lot at Shell sign, continue behind Shell station. DO NOT TURN RIGHT AT END OF SHELL BUILDING, continue along wooden fencing and follow to right, ® National Trails Hwy to bus stop in front of Shell Station.

#### FROM NATIONAL TRAILS HWY & 40 FREEWAY:

From National Trails Hwy, (L) 40 Freeway West, into 15 Freeway South, (R) 58 Freeway West, (R) W Main St exit, (R) W Main St, (L) Sandstone Ct, (L) into Barstow Division.

### DESTINATION SIGN CODES:

TERMINAL	DISPLAY	CODE
Barstow City Hall	29 Barstow	290
National Trails Hwy & 40 Freeway	29 Newberry Springs	294
	Sorry, Not in Service	101